

7.8 Architectural Drawings

The following architectural drawings were prepared by Purcell Miller Tritton based on the survey work carried out by Michael Morrison during the 2003 visit to the site. The survey was carried out with simple equipment, tape measure, spirit level and plumb bob. In any future visit to the site it would be desirable to take more sophisticated equipment to record internal and external levels.

The drawings are in two sets. One set shows the buildings as existing in February 2003, the second shows the buildings as they will be after the

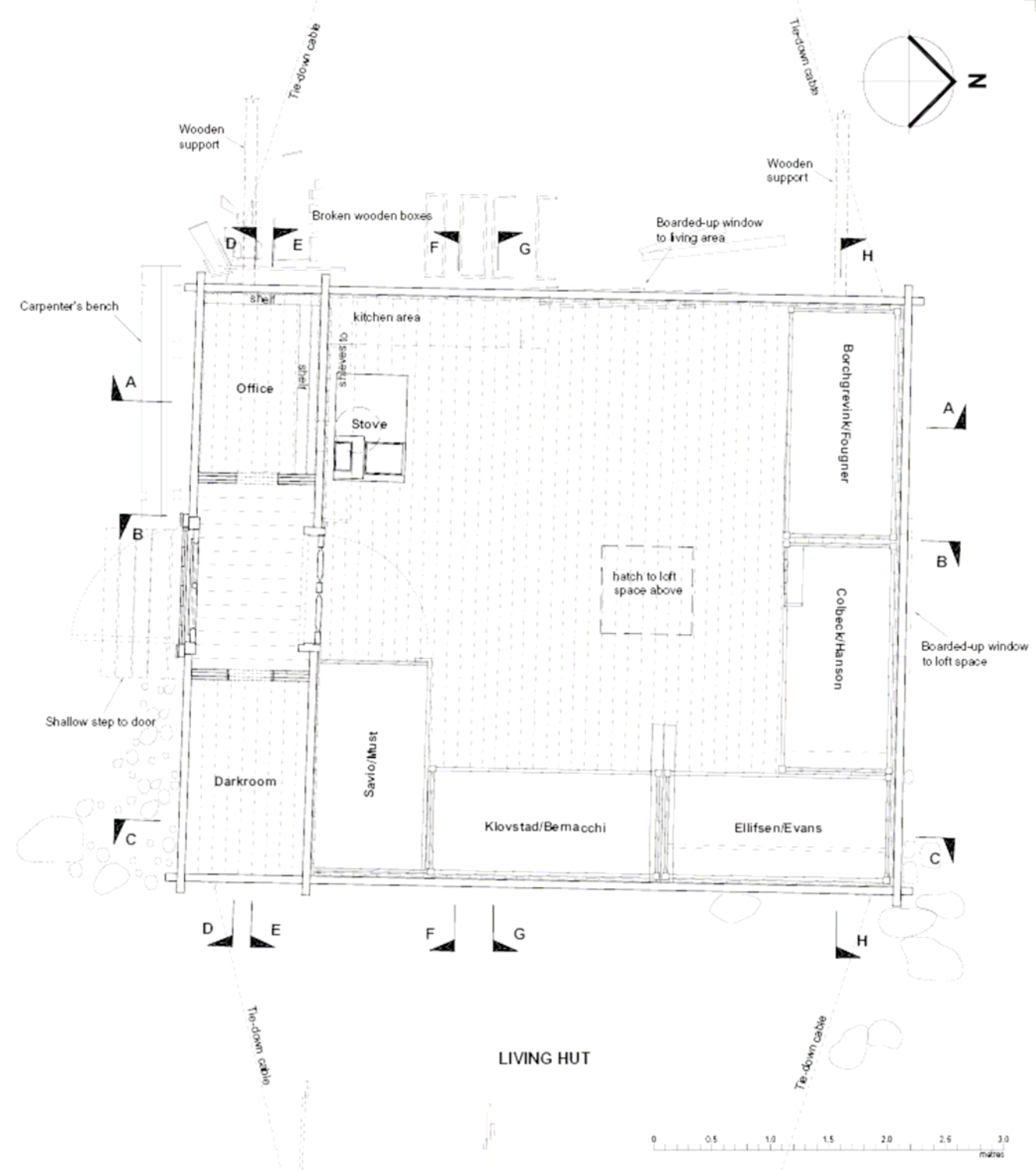
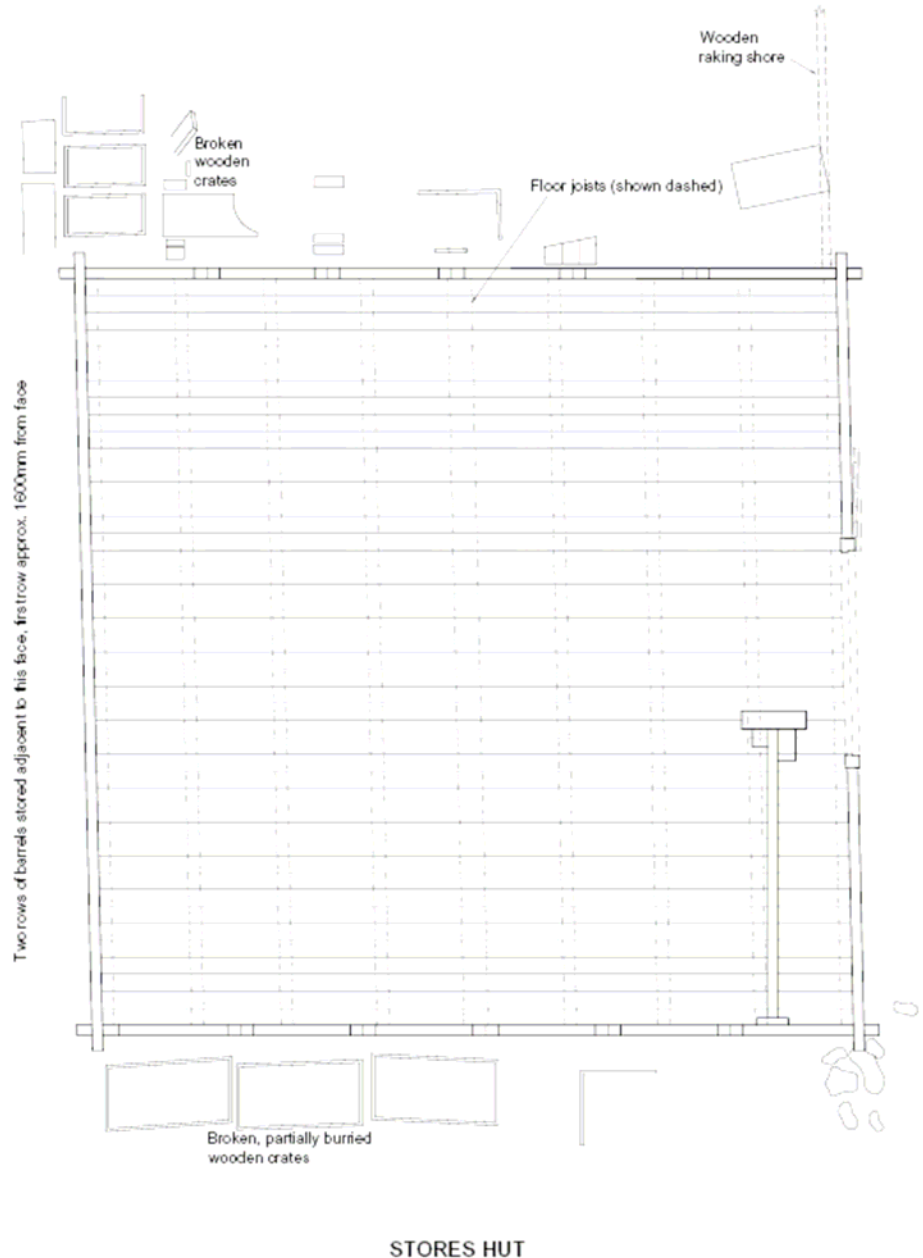
proposed conservation work. The drawings are arranged with 'existing' and 'proposed' versions opposite each other to allow easy comparison.

The drawings were created using AutoCAD LT version 2002. The scales are correct when the drawings are printed at A1. The scale bar printed on the drawings may be helpful when looking at the A4 drawings reproduced in this plan. The A1 AutoCAD drawings are held by the Antarctic Heritage Trust on CD and also by Purcell Miller Tritton.

SCHEDULE OF DRAWINGS

No. Document Title Scale at A1

No.		Document Title	Scale at A1
783900	002	Plan of Stores Hut & Living Hut as Existing	1:20
783900	012	Plan of Stores Hut & Living Hut as Proposed	1:20
783900	003	Stores Hut External Elevations as Existing	1:20
783900	013	Stores Hut External Elevations as Proposed	1:20



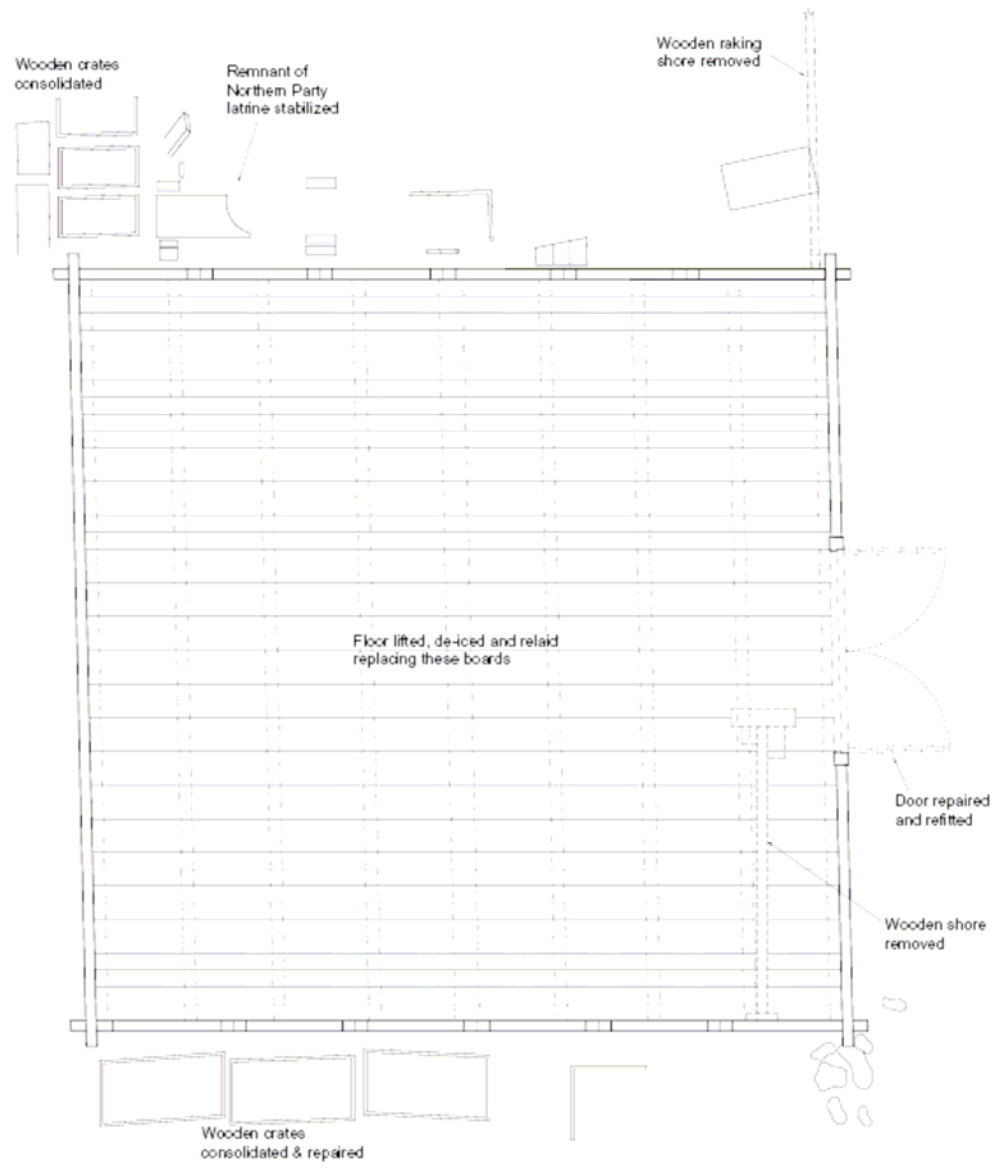
Copyright © Antarctic Heritage Trust (NZ)

REVISION	DATE	DRAWN	CHECKED	DESCRIPTION	FOUR	DATE
1	12/03/03	MM	MM	PLAN OF STORES HUT & LIVING HUTS EXISTING	120 @ A1	14.07.03

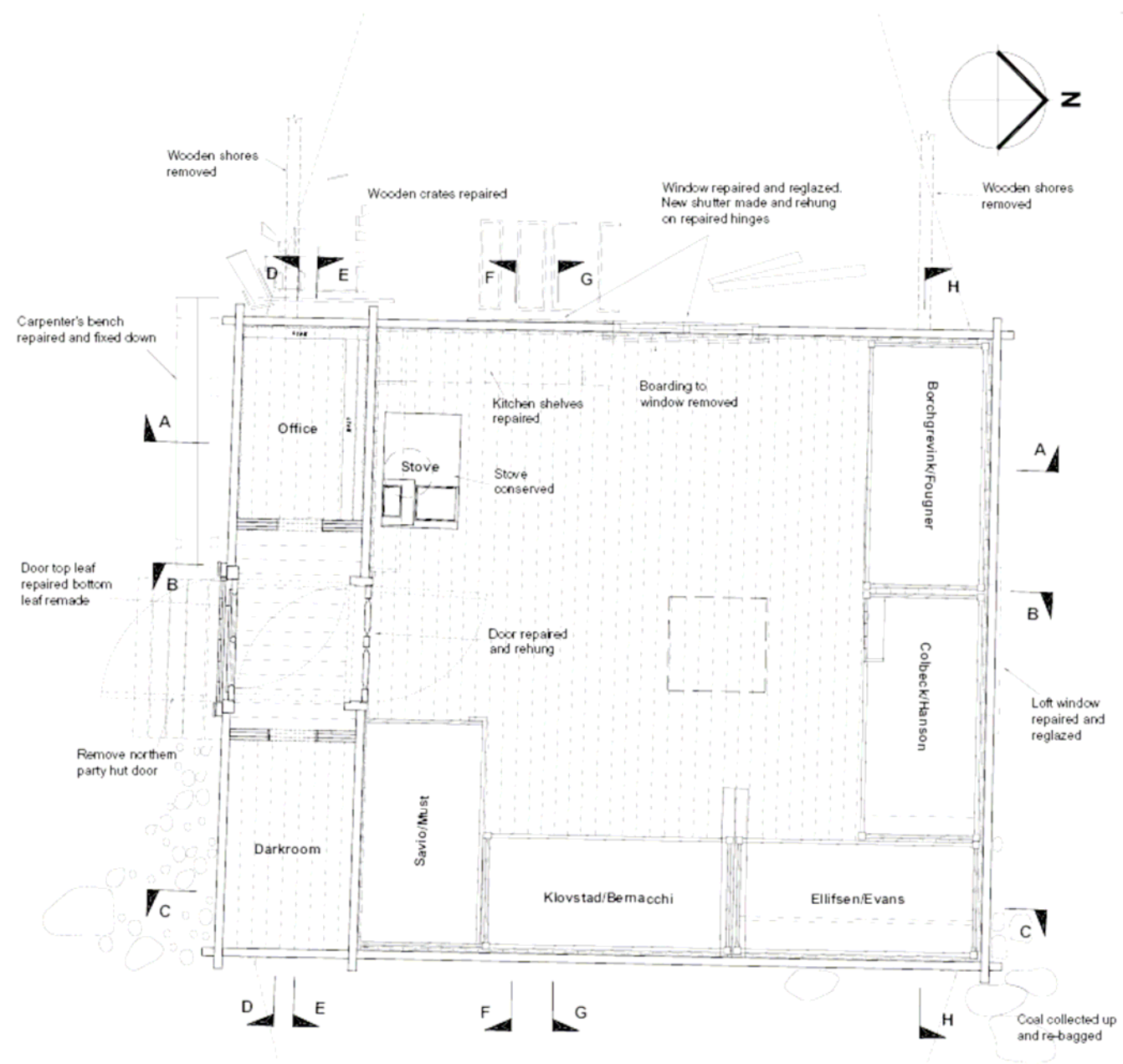
ANTARCTIC HERITAGE TRUST
PROJECT: HUTS AT CAPE ADARE
DRAWING TITLE: PLAN OF STORES HUT & LIVING HUTS EXISTING
DRAWING NO: 783900 002

© COLLEGE NORTHEN NORFOLK ISLAND TERRITORY

PURCELL MILLER TRINSON



STORES HUT



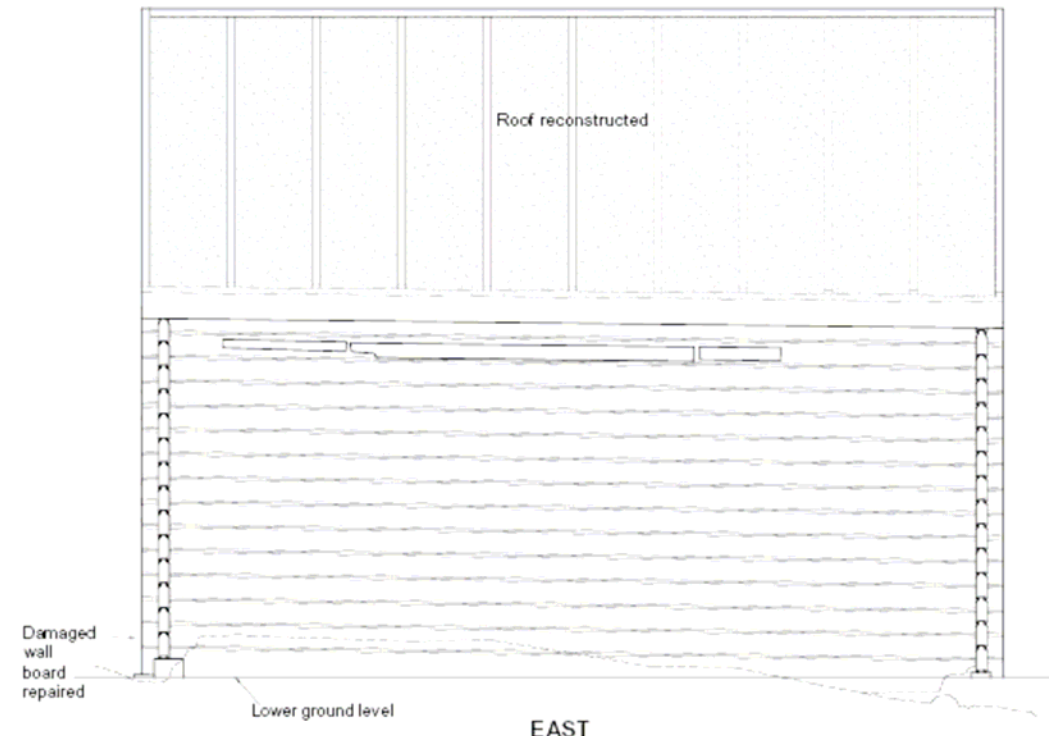
LIVING HUT



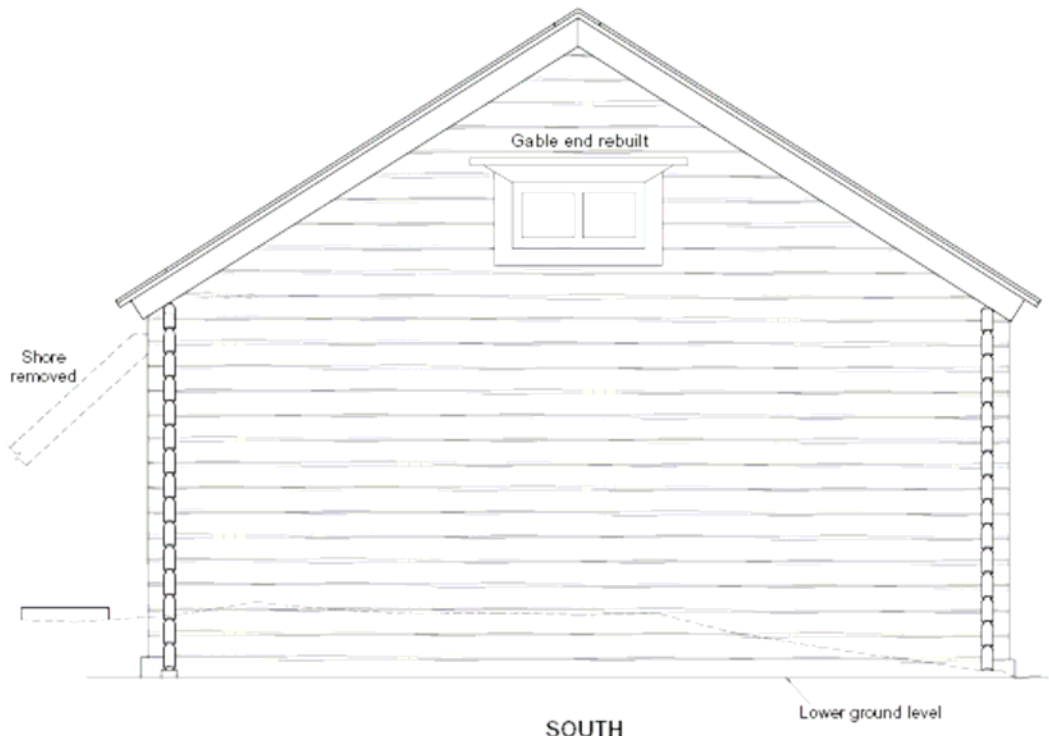
COPYRIGHT © ANTARCTIC HERITAGE TRUST (NZ)

REVISION	DATE	DRAWN	CHECKED	DESCRIPTION	SCALE	DATE
01				ANTARCTIC HERITAGE TRUST	1:20 @ A1	26.11.03
				PROJECT HUTS AT CAPE ADARE		
				DRAWING TITLE		
				PLAN OF STORES HUT & LIVING HUT - PROPOSED REPAIRS		
					783900 012	

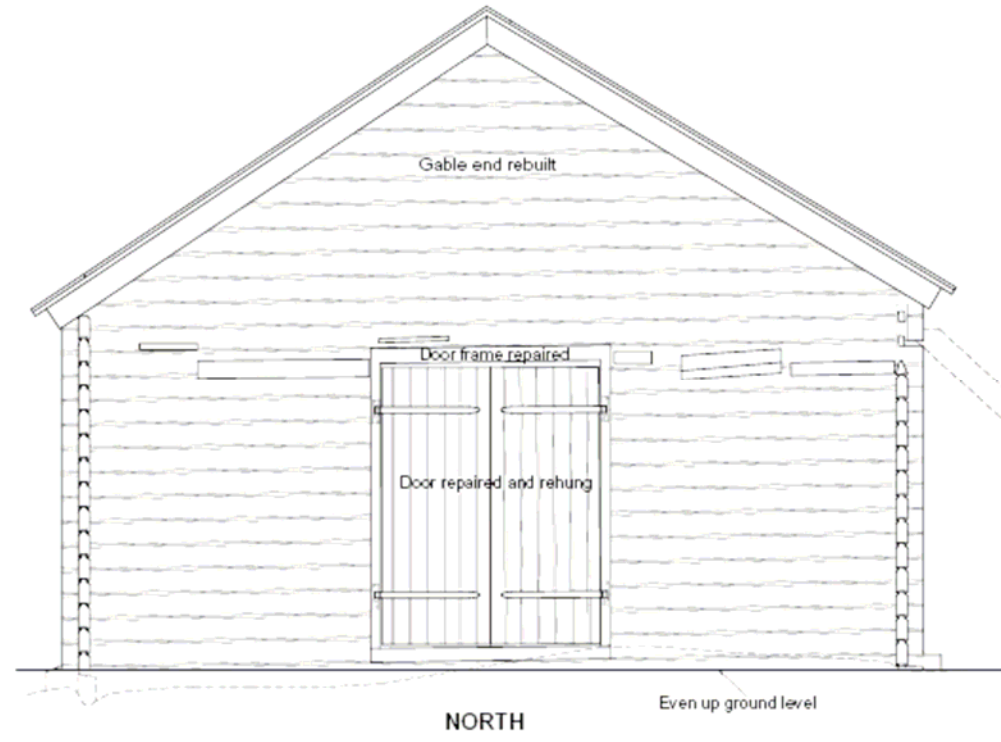
ANTARCTIC HERITAGE TRUST
 ANTARCTIC HERITAGE TRUST
 ANTARCTIC HERITAGE TRUST



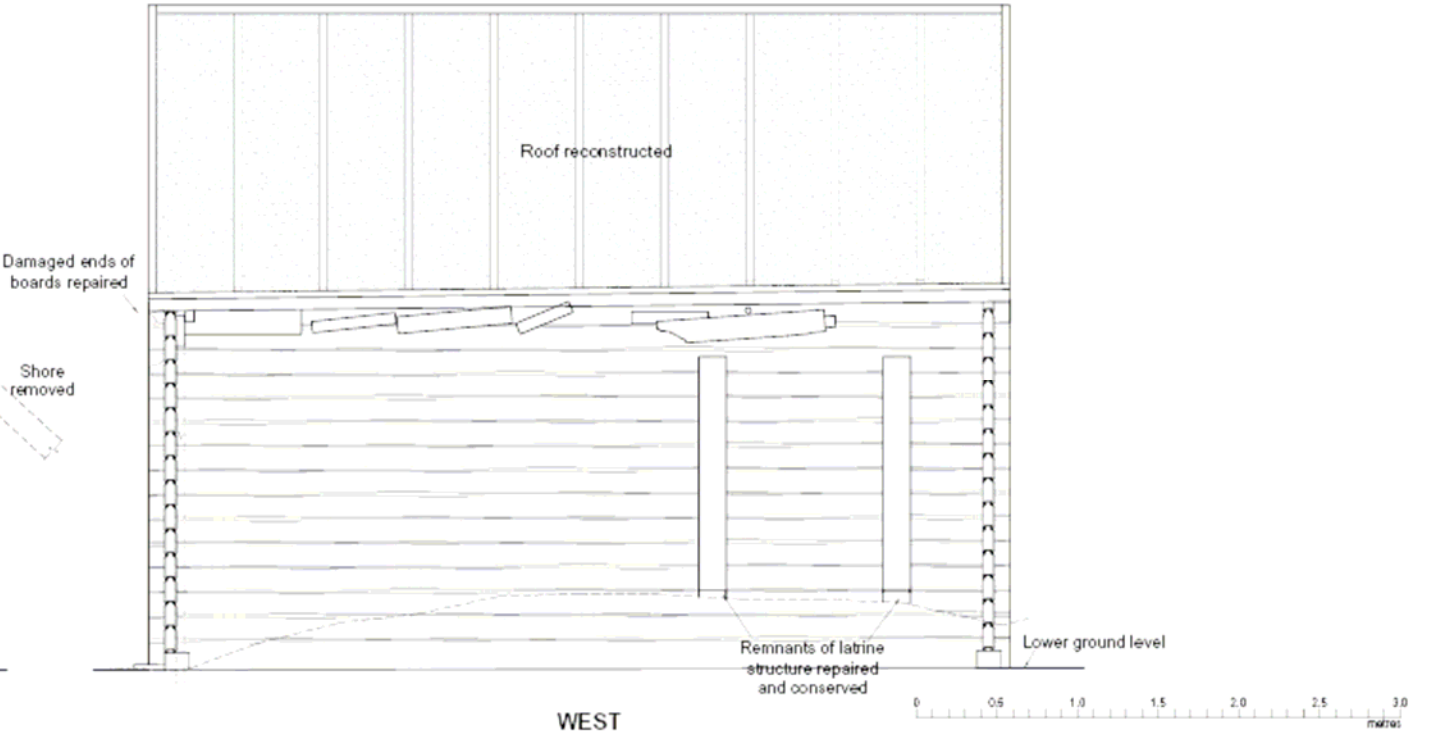
EAST



SOUTH



NORTH



WEST

COPYRIGHT © Antarctic Heritage Trust (NZ)

REVISION	DATE	DRAWN	CHECKED	DESCRIPTION	SCALE	DATE
01				ANTARCTIC HERITAGE TRUST	1:20 @ A1	26.11.03
				PROJECT: HUTS AT CAPE ADARE	DRAWN: KLD	CHECKED: MM
				DRAWING TITLE: STORES HUT EXTERNAL ELEVATIONS - PROPOSED REPAIRS	JOB NUMBER: 783900	DRAWING NO.: 013

SCALE: 1:20 @ A1
 DRAWN: KLD
 CHECKED: MM
 JOB NUMBER: 783900
 DRAWING NO.: 013

ANTARCTIC HERITAGE TRUST
 PURCHASING DIVISION